



Printer installation(PC)

September 2022

2

1. Download driver from:

<https://cscsupportftp.mykonicaminolta.com/DownloadFile/Download.ashx?fileversionid=34224&productid=1706>

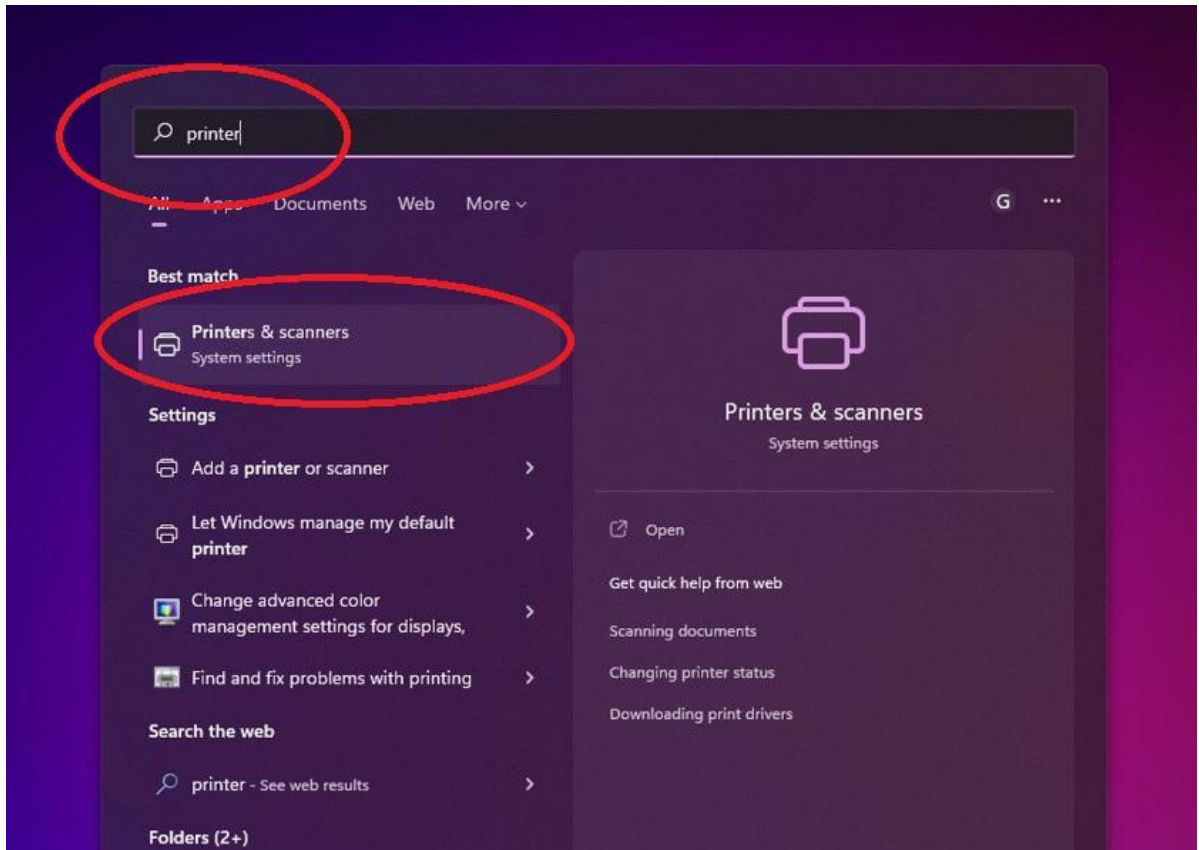
2. Navigate to your downloads folder, right-click on zipped file and select “extract all” (the default location will be the downloads folder also)

3. Open Search from taskbar



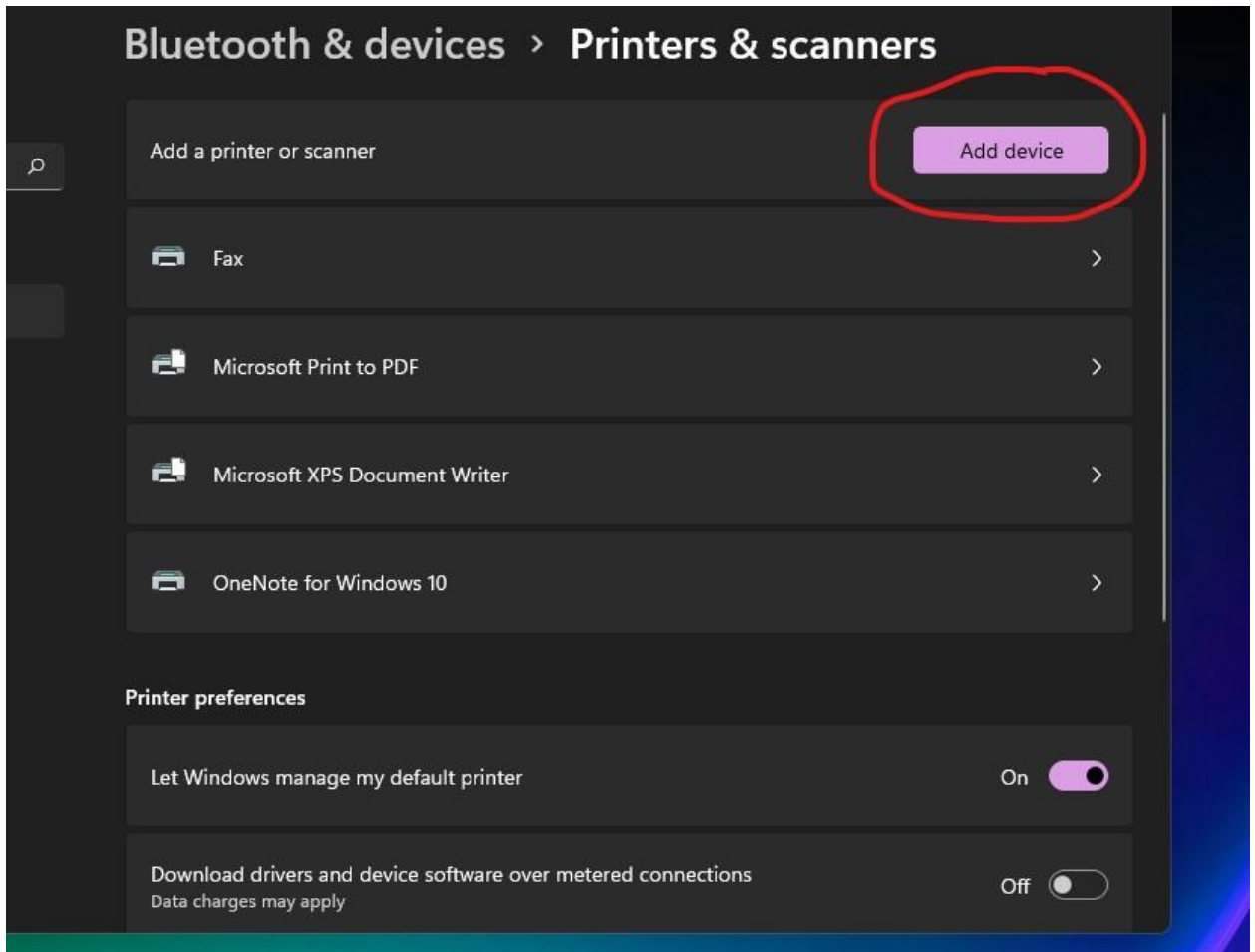
3

4. Type "Printer" select Printers and scanners, then hit enter.

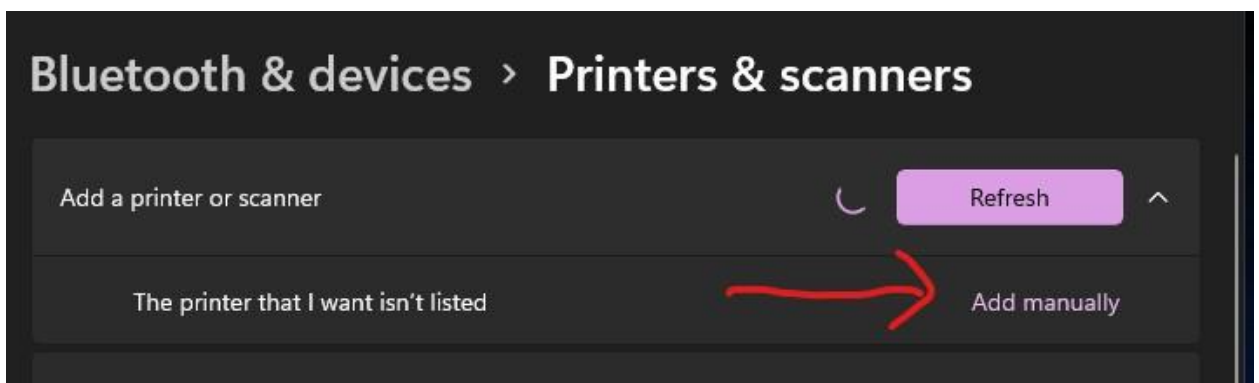


4

5. Click "add device"

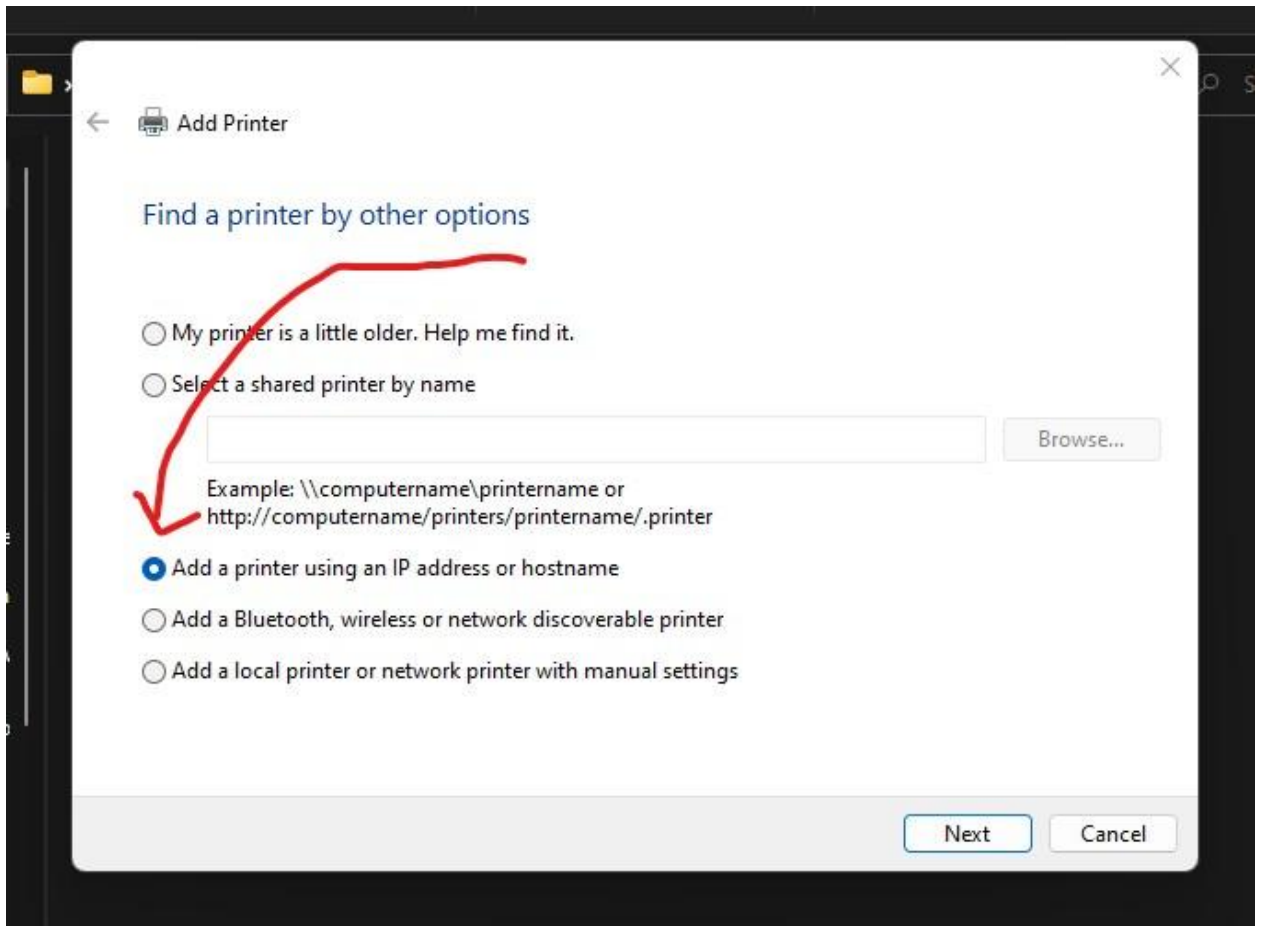


6. "Add manually" option will appear, click.

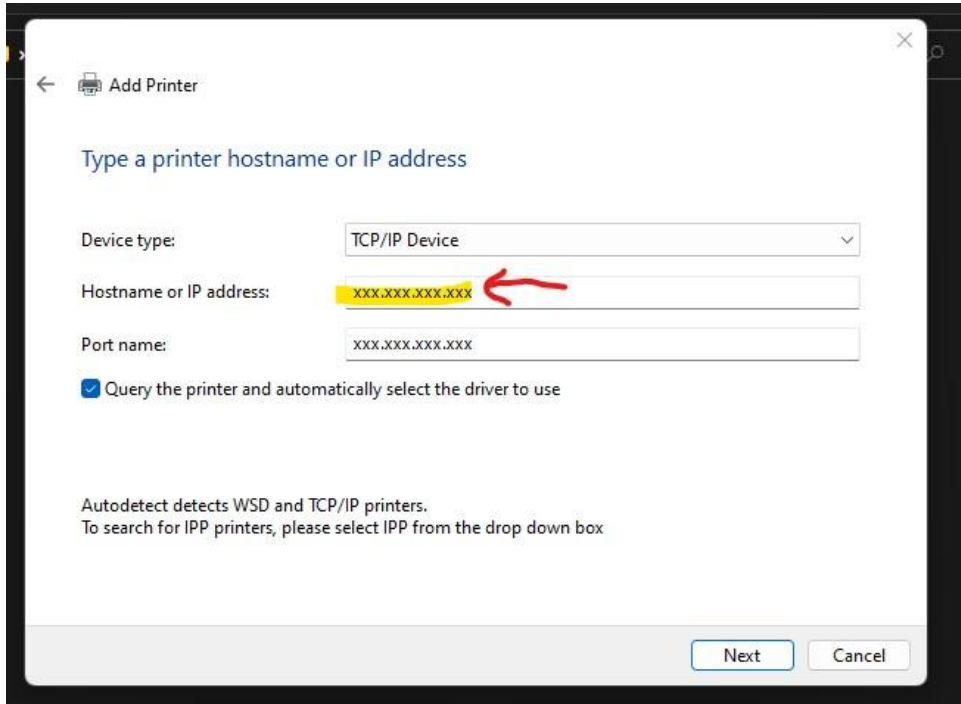


5

7. Pop-up will open, select "Add a printer using IP address"



Type IP address of machine to be installed and hit **next**



← Add Printer

Type a printer hostname or IP address

Device type: TCP/IP Device

Hostname or IP address: xxx.xxx.xxx.xxx

Port name: xxx.xxx.xxx.xxx

Query the printer and automatically select the driver to use

Autodetect detects WSD and TCP/IP printers.
To search for IPP printers, please select IPP from the drop down box

Next Cancel

Printer/Copier Device Information

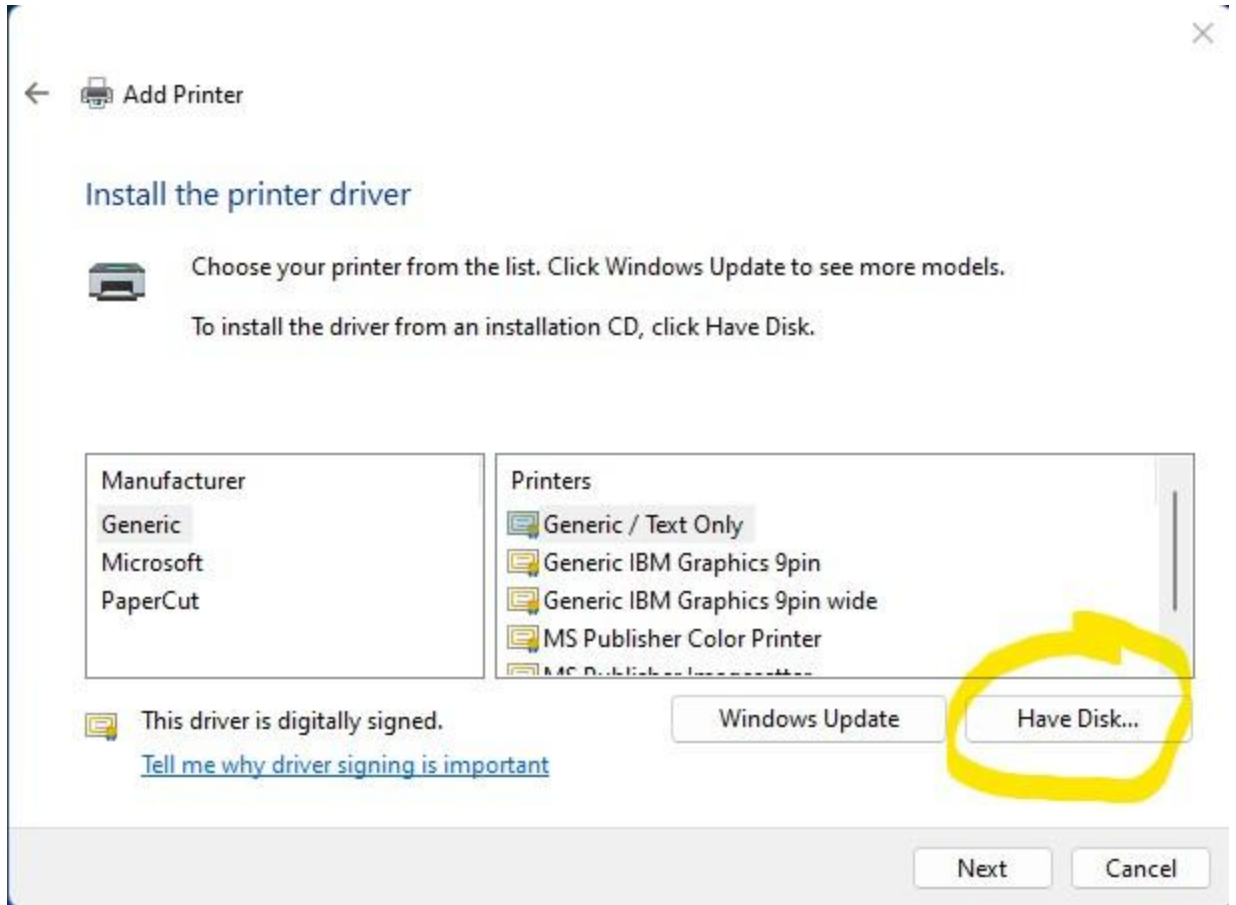
Model : Konica C3350
Location : 11C 3rd Floor
Network Copier Name : 11c 3rd Floor
Device ID : U10158
IP Address : 192.168.1.94

Model : Konica C3350
Location : 11C 1st Floor
Network Copier Name : 11c 1st Floor
Device ID : U10159
IP Address : 192.168.0.93

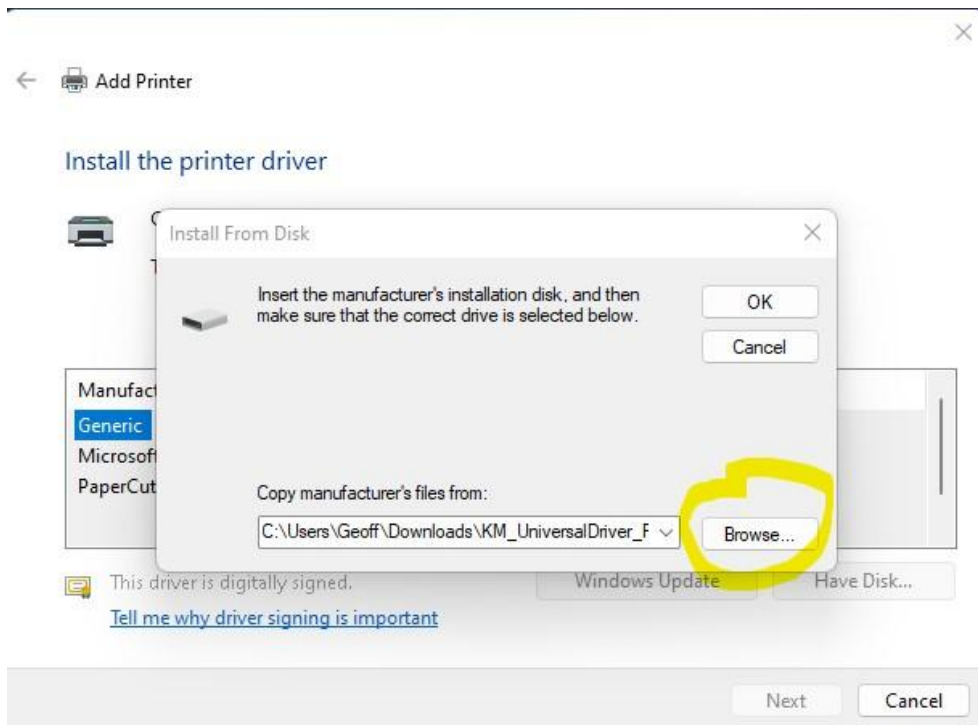
Model : Konica C258
Location : 11C 2nd Floor
Network Copier Name : 11c 2nd Floor
Device ID : P7254
IP Address : 192.168.0.200

Model : Konica C258
Location : 32N C 2nd Floor
Network Copier Name : 32N 2nd Floor
Device ID : P7254
IP Address : 192.168.1.151

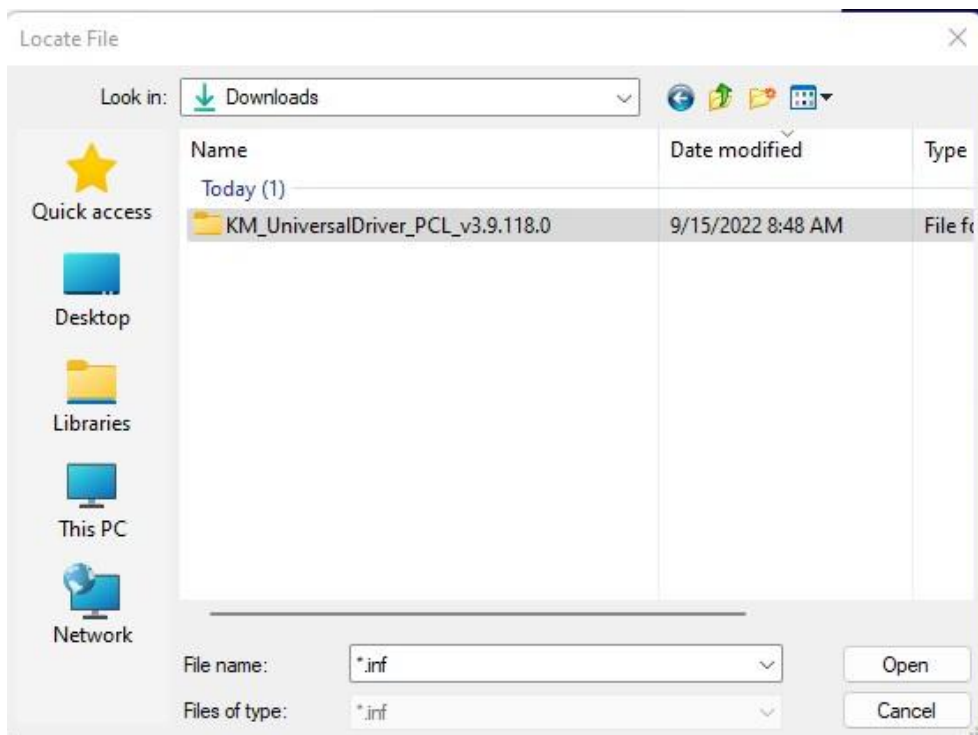
8. Select "Have Disk"



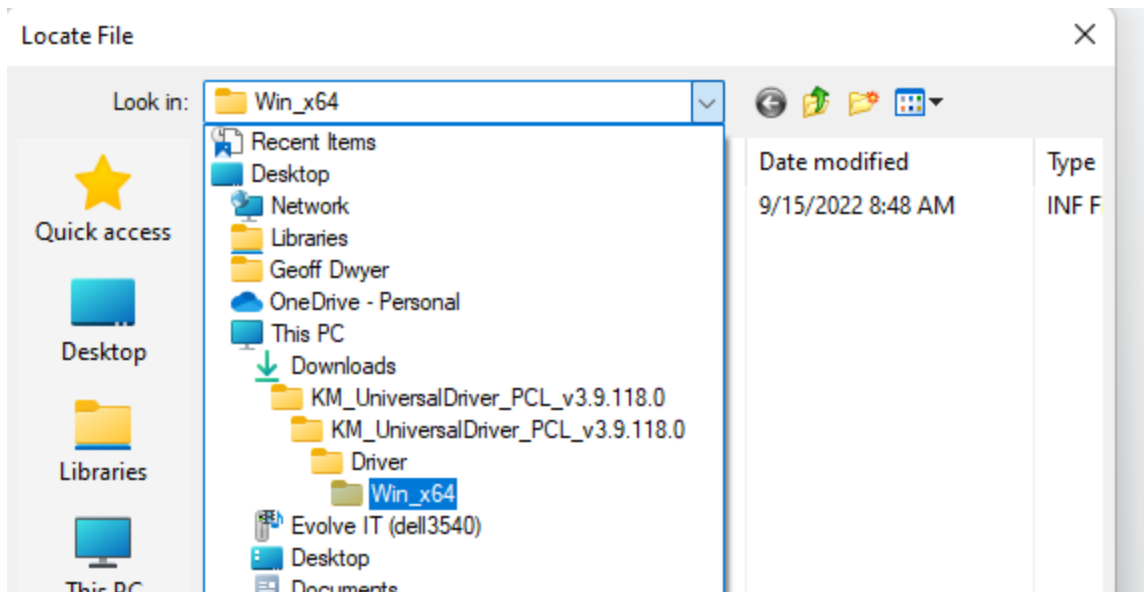
9. Select "Browse"



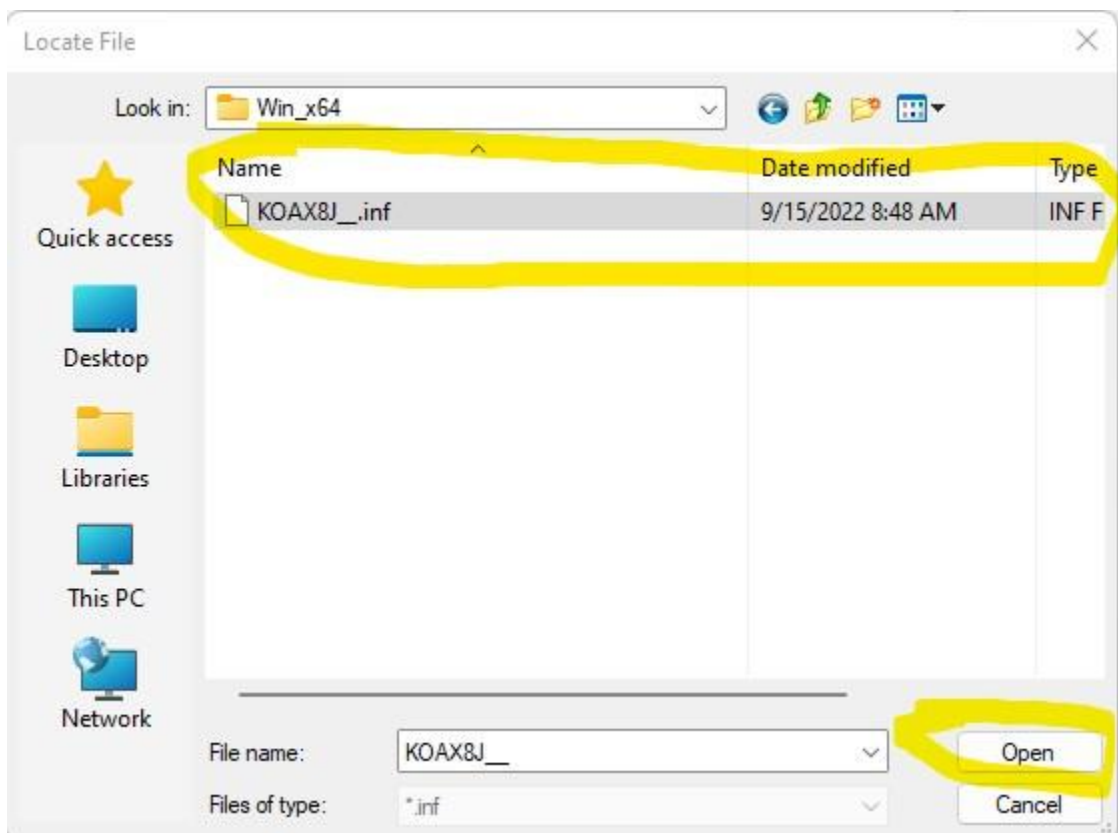
10. Browse to downloads folder and select the folder previously extracted



11. Browse to Win_x64 folder



12. Select .inf shown and hit "Open"



13. Hit "Ok"



14. Follow prompts to finish installation.